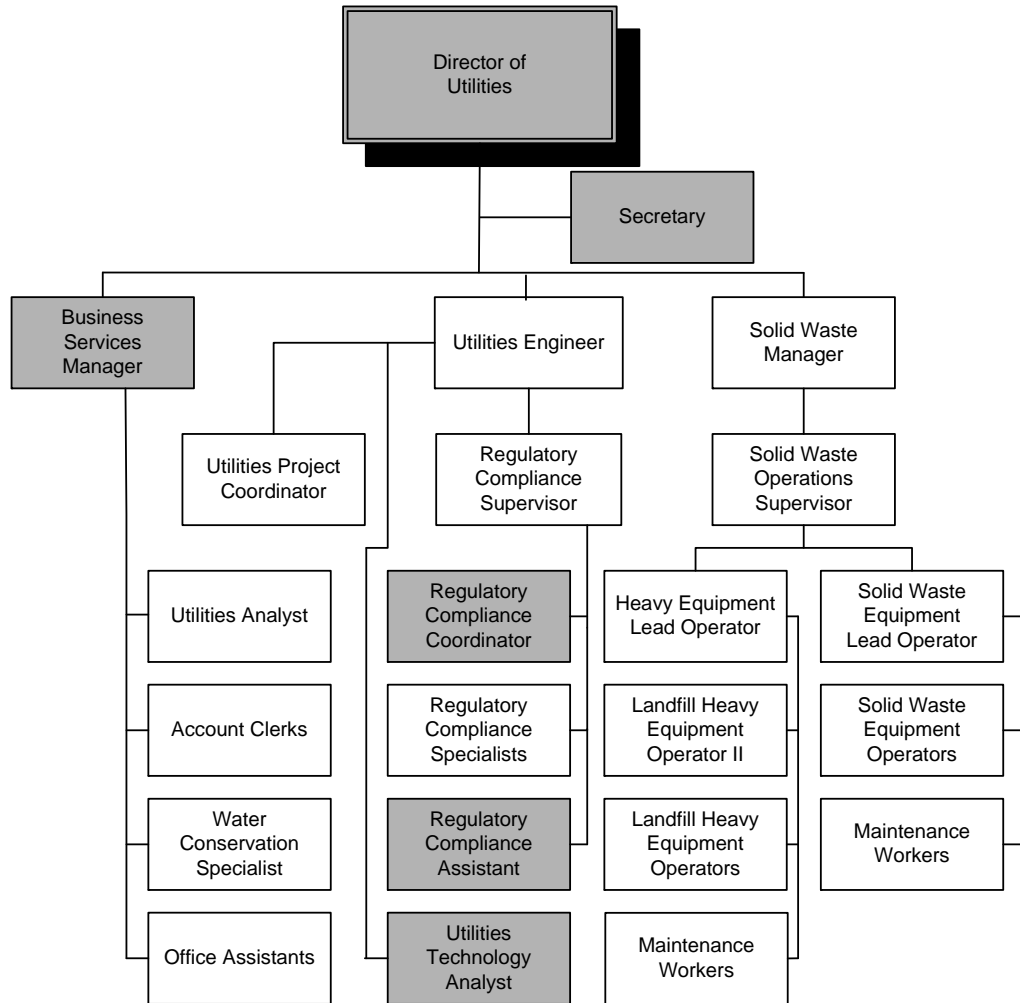
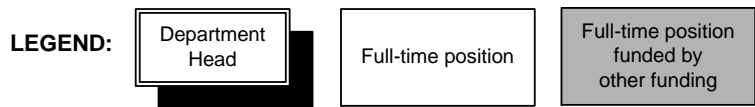


SOLID WASTE COLLECTION & DISPOSAL



The above organizational chart depicts full-time and part-time employees only



UTILITIES

DEPARTMENT: Utilities **PROGRAM:** Solid Waste Collection & Disposal Services
DIVISION: Refuse & Street Sweeping **FUND:** Solid Waste Collection & Disposal Funds

	Actual 2010-11	Adopted 2011-12	Year-End Estimated 2011-12	Proposed 2012-13	Proposed 2013-14
<u>PROGRAM EXPENSES/REVENUES</u>					
Salaries & Benefits	\$ 3,897,590	\$ 4,289,140	\$ 4,030,700	\$ 4,468,460	\$ 4,591,400
Services & Supplies	11,485,290	12,858,770	11,703,650	13,214,450	13,219,480
Total Operating Cost	15,382,880	17,147,910	15,734,350	17,682,910	17,810,880
Capital	392,920	1,666,720	5,496,120	1,073,160	1,571,680
Debt Service					
Transfers	497,670	497,670	497,670	508,130	508,130
Total Cost	\$16,273,470	\$19,312,300	\$21,728,140	\$19,264,200	\$19,890,690

SUMMARY OF SERVICE PROGRAMS

Refuse Collection - Residential	\$ 3,377,940	\$ 4,805,030	\$ 4,187,750	\$ 5,280,380	\$ 5,184,800
Refuse Collection – Commercial	3,768,200	3,920,930	4,031,620	3,997,430	4,017,720
Refuse Coll. - Street Sweeping	328,320	363,120	328,470	363,150	363,280
Refuse Collection - Recycling	1,541,280	1,250,650	1,315,510	921,810	933,090
Total Refuse Collection	9,015,740	10,339,730	9,863,350	10,562,770	10,498,890
Refuse Disposal	7,257,730	8,972,570	11,864,790	8,701,430	9,391,800
Total Service Programs	\$16,273,470	\$19,312,300	\$21,728,140	\$19,264,200	\$19,890,690

SUMMARY OF POSITIONS

FULL-TIME

Account Clerk I – Scalehouse	3	3	3	3	3
Landfill Heavy Equip. Lead Oper.	1	1	1	1	1
Landfill Heavy Equip. Operator	4	4	4	4	4
Landfill Heavy Equip. Operator II	1	1	1	1	1
Maintenance Worker I/II	8	10	10	10	10
Office Assistant I/II	1	1	1	1	1
Regulatory Compliance Specialist	1	1	1	1	1
Regulatory Compliance Sup.	1	1	1	1	1
Solid Waste Equip. Lead Operator	1	1	1	1	1
Solid Waste Equipment Operator	17	18	18	18	18
Solid Waste Manager	1	1	1	1	1
Solid Waste Operations Sup.	1	1	1	1	1
Utilities Analyst	1	1	1	1	1
Utilities Engineer	1	1	1	1	1
Utilities Project Coordinator	1	1	1	1	1
TOTAL	43	46	46	46	46

UTILITIES

DEPARTMENT: Utilities **PROGRAM:** Solid Waste Collection & Disposal Services
DIVISION: Refuse & Street Sweeping **FUND:** Solid Waste Collection & Disposal Funds

	Actual 2010-11	Adopted 2011-12	Year-End Estimated 2011-12	Proposed 2012-13	Proposed 2013-14
<u>SUMMARY OF POSITIONS (continued)</u>					
<u>PART-TIME</u>					
Laborer III	3	1	1	1	1
TOTAL	3	1	1	1	1
GRAND TOTAL					
	46	47	47	47	47
<u>TEMPORARY (FTE)</u>					
Assistant Clerk - Office	0.5	0.5	0.5	0.5	0.5
Utilities Technician	0.5	0.5	0.5	0.5	0.5
TOTAL TEMPORARY (FTE)	1.0	1.0	1.0	1.0	1.0

PROGRAM DESCRIPTION

Solid Waste Collection and Disposal Services consist of six distinct areas: Refuse collection/residential; refuse collection/commercial; landfill disposal operations; street sweeping; recycling operations; and regulatory compliance.

Refuse Collection/Residential

The Residential Collection Program provides weekly refuse collection using state-of-the-art, fully automated equipment. In 2011, the program serviced an estimated 17,400 accounts, collecting roughly 27,890 tons of refuse, with approximately 3,170 loads transported to the City's landfill.

Refuse Collection/Commercial

The Commercial Collection Program provides refuse collection, using front-loading trucks, to approximately 1,200 commercial businesses. Customers are serviced one to six times per week using containers ranging from two to six cubic yards. In 2011, the program collected roughly 29,940 tons of commercial refuse, with approximately 3,700 loads transported to the City's landfill.

Street Sweeping

Solid Waste is responsible for overseeing, contract street sweeping for approximately 1,602 curb miles of City streets, improved alleys, and 17 acres of City-owned parking facilities per month. This includes emergency street sweeping as a result of known non-hazardous spills due to traffic accidents. The total annual curb miles swept is approximately 19,226 miles. This program ensures the appearance, safety, and health of the City through a high level of street and gutter line sweeping. All streets, within the City limits, are swept on a bi-weekly basis. Additional street sweeping is required to comply with the City Storm Water Management Plan requirements, as approved by the Regional Water Quality Control Board (RWQCB).

Landfill Operations

The Santa Maria Regional Landfill provides solid waste disposal services to northern Santa Barbara County and the Nipomo area of southern San Luis Obispo County. In 2011, approximately 430,950 tons of materials were

UTILITIES

DEPARTMENT: Utilities
DIVISION: Refuse & Street
Sweeping

PROGRAM: Solid Waste Collection & Disposal Services
FUND: Solid Waste Collection & Disposal Funds

brought through the landfill scales. Of that total, 262,220 tons were brought in as Non-hazardous Hydrocarbon Impacted Soils (NHIS) to help expedite the annual rolling closure. About 81,830 tons were diverted as recycling or alternative daily cover material, while the remaining 86,900 tons were landfilled. The decreased landfill tonnage can be attributed to lack of construction and to increased recycling efforts at the landfill, which included the start of the curbside green waste collection program in July 2011. Landfill operations include: baling of agricultural plastic; post-closure maintenance of the closed area of the landfill; ongoing rolling closure of the area of the landfill with NHIS as foundation layer; household hazardous waste collection; landfill gas collection system; concrete and asphalt recycling program; and the Recycling Park, which includes an area to divert appliances, metals, cardboard, textiles, tires, green waste, wood waste, electronic waste, construction and demolition material (i.e. drywall, roofing shingles) and inert material (i.e. brick, tile, porcelain) from being landfilled.

Recycling

Recycling services are available to all residential and commercial accounts within the City. The program consisting of collecting, transporting, and disposing of commingled recyclable materials is a regular utility-type operation that utilizes both the City's fully automated collection equipment and staff. In addition, in July 2011, the City began a curbside green waste collection program. The City delivered more than 16,000 new containers to residential customers. Approximately 13,600 residential stops are served bi-weekly and about 1,200 commercial stops provide weekly service to approximately 840 commercial customers. In 2011, there were approximately 8,810 tons of recycled material collected in over 2,270 loads from both the residential and commercial collections. In six months of operation, in 2011, the residential green waste program collected approximately 2,780 tons of green waste in 389 loads, which were sent to a composting facility. This recycling effort is in response to Assembly Bill 939 and Senate Bill 1016 requirements to meet 50 percent diversion goals established by the State of California. The current diversion goal reported to the State agency shows the City attaining above a 60 percent overall waste stream diversion. However, in 2011 California enacted Assembly Bill 341 which now mandates each city to attain a diversion goal of 75 percent by the year 2020. The continued recycling efforts and creation of recycling programs will be needed to achieve this new goal.

Regulatory Compliance

Landfill Gas Extraction System

Regulatory Compliance staff monitors and manages a gas extraction system composed of some 53 gas collection wells at the landfill. Collection wells are analyzed on a monthly basis along with 26 perimeter gas probes on a quarterly basis. These collection wells extract landfill gas (primarily composed of methane) that are produced in the decomposition of refuse while the perimeter gas probes ensure gas is not migrating off-site. The landfill gas is collected and transported through special gas lines to the flares that burn the methane, to the cogeneration plant on-site and at Marian Regional Medical Center to generate electricity, or in the case that one or both of the cogeneration facilities are down, the landfill gas is then directed to one of the two on-site flares to ensure it is properly controlled. Staff consistently monitors and maintains this system to ensure optimal operating performance. Semi-annual and annual reports are submitted to the Air Pollution Control District.

Landfill Groundwater Monitoring

On a quarterly basis, the City is required to monitor and collect samples from 25 groundwater monitoring wells and five piezometers. These wells monitor the condition of the groundwater below the landfill. All operations and analytical results are reported on a semi-annual and annual basis to the RWQCB.

Landfill Surface Monitoring

This program ensures that landfill gas is being directed to the flare or cogeneration plant rather than to the atmosphere or under soil structures. Regulatory Compliance staff monitors the landfill surfaces utilizing an

UTILITIES

DEPARTMENT: Utilities
DIVISION: Refuse & Street
Sweeping

PROGRAM: Solid Waste Collection & Disposal Services
FUND: Solid Waste Collection & Disposal Funds

- Present an Open Space Management Plan for the Integrated Waste Management Facility at Los Flores Ranch Park to the City Council and to the public, that identifies long-term passive uses at the park before and during commencement of the on-site landfill operations, as well as sites and methods to mitigate the landfill's environmental effects.

NOTEWORTHY BUDGET HIGHLIGHTS

- To meet financial reassurance thresholds set by the State, appropriate \$186,190 for the increased Financial Reassurance Deposit. Financial assurance deposits are monies required by State and Federal law to be used for the closure and postclosure care costs of the landfill for up to a 30-year period after closure of the landfill.
- An additional appropriation increase of \$62,000 for solid waste disposal fees for City refuse trucks entering the landfill daily is proposed. This is in response to Council's action in May whereby the landfill gate rates were increased. This results in a proportional increase in revenue for the landfill.
- Reclassify two full-time Maintenance Worker I positions to Maintenance Worker II positions to create senior lead positions among crews. The goal is to ensure that there will be a senior Maintenance Worker on duty over the seven-day-a-week operation at the landfill.
- A rehabilitation project is planned for the landfill's main access road that leads to the scalehouse as well as the access road that leads to the household hazardous waste facility. These roads were built in the late 1990s, and in the early 1980s, respectively. Both access roads are due for rehabilitation and will require a two-inch asphalt overlay to ensure a safe route for customers entering the landfill in years to come.
- During the next two-year budget cycle, staff intends to purchase and install on-board scales in all automated siders and commercial frontloaders. Adding a digital scale readout on refuse trucks will eliminate the guesswork for the driver when having to determine if vehicles are too heavy or too light. Underweight vehicles decrease production efficiency and create undue wear on the vehicles, while overweight vehicles are unlawful and subject to fines by the California Highway Patrol. This fleet upgrade will only affect the refuse collection routes as the recycling and green waste routes typically do not have over or under load issues.
- The construction of a second truck wash pad and drainage inlet at the landfill will make the daily washing of refuse trucks more efficient as well as collect sediment washed off the refuse trucks. Presently, the landfill has one wash pad resulting in long wait times, which directly reduces productivity.

2012-14 BUDGET

CITY OF SANTA MARIA



The Solid Waste Division will complete the change-out of all refuse and recycling containers to the current standardized version. This change-out will replace old containers, that have exceeded the projected lifespan, with newer containers that are better capable of withstanding winds, thereby reducing windblown litter.



The landfill receives Non-hazardous Hydrocarbon Impacted Soils (NHIS) to help expedite the annual rolling closure.